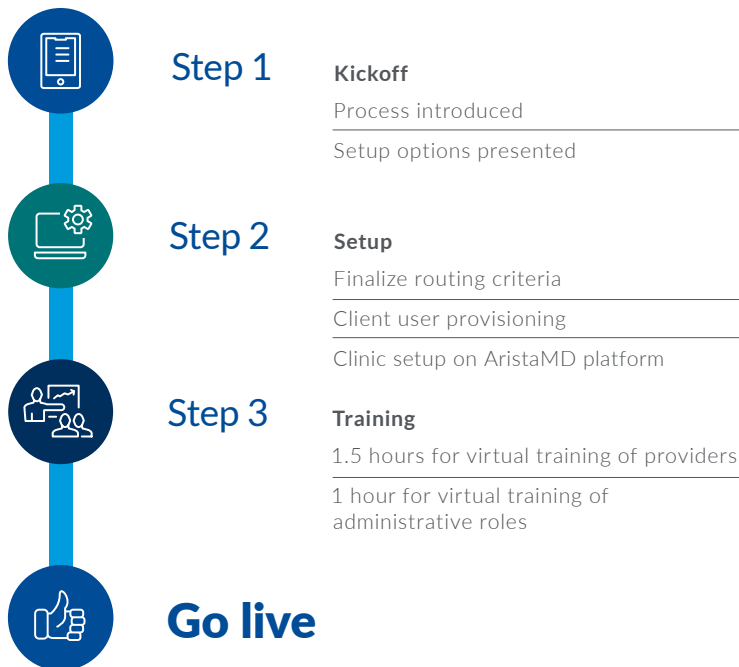


# Easy implementation.

Simple to use,  
immediate results.

## How it works



### Flexible platform

**We can go live within days of signing a contract with your site.**

AristaMD provides numerous setup options for your practice. You choose what works for your setting, and we ensure minimal disruption to your clinical workflow.

Whether your practice chooses to integrate us with your EHR or use our standalone web-based platform, we ensure that all relevant patient records, eConsults, and reports are stored in your EHR, thus eliminating any burden.

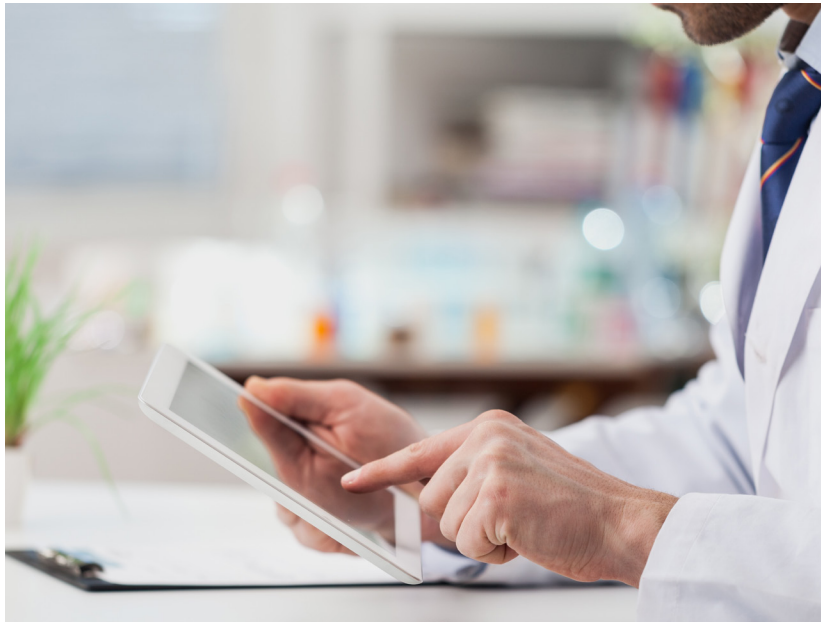


For more information or to request a demo, contact us at [info@aristamd.com](mailto:info@aristamd.com)

858.750.4777  
[www.aristamd.com](http://www.aristamd.com)

**Arista|MD**

# eConsult workflow



**1 Provider**

Orders referral within EHR, including any additional related information



**2 Referral coordinator or AristaMD staff**

Attaches relevant patient data and submits to specialist in AristaMD portal



Specialist reviews and dispositions eConsult



Notification sent to PCP

**3 Provider**

Provider views specialist eConsult report



**4 Provider**

Provider asks a question or finalizes the eConsult



PCP updates patient chart with next steps



PCP treats patient accordingly

**5 Health info department or AristaMD staff**

Patient records are updated in EHR

